



Easystore Flex
Rental, depot and drying systems



Easystore Flex

Custom-made solutions – the right choice for everyone.

WINTERSTEIGER's Easystore Flex systems for rental, depot and drying are extremely flexible and stable – they also offer a modern design as well as many new solutions that make them highly functional.

The Flex Modules can be combined for customized solutions.

Easystore Flex is the result of: the feedback and needs of our global customers, the further development of the tried-and-tested Easystore systems and the collaboration with renowned design agencies.

Experience the successful difference of Easystore Flex!



Contents:

Product Features	4
Modules	
Module Ski Straight	8
Module Ski 20° with Easyclip	10
Module Snowboard Vertical	12
Module Snowboard Horizontal	14
Module Universal Hanging	16
Module Boots/Helmets	22
Module Drying Optima	24
Module Drying Premia	26
Boot/Helmet Dryer Innova	28
System Lengths, Types, Features	30
Easystore Shop Furniture	32
Easystore Depot Systems	34

NEW: Flexframe makes the front panels flexible.

By using the Flexframe system you can quickly and easily change your front panels – e.g., for the summer or winter seasons.

Summer season, winter season, or simply a new look? With Flexframe, the choice is yours. Your rental system can be personalized quickly and easily with new front panels. The frames have been deliberately designed in neutral aluminum and

to be as narrow as possible, so their modern, sleek look does not distract from the designs on the front. A recessed grip has been subtly integrated into the frame for moving the rental racks. This ensures that the sleek look is maintained

without any unsightly handles. Printed with your logos and according to your design ideas on a choice of robust and stable panels or fabric. The advantage: The fabric covering is easy to store and takes up little space.

There are no limits to your creativity.

Winter



Summer



Summer season,
winter season, or
simply a new look?
Easy to replace
front panels

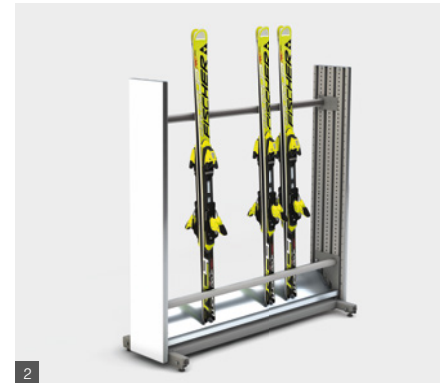
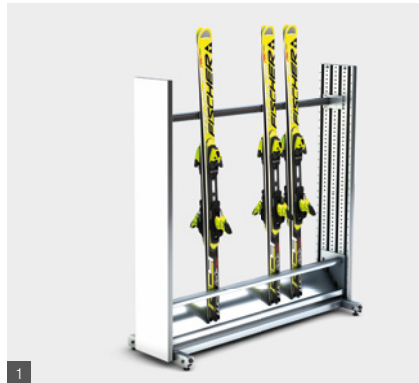
Promotion



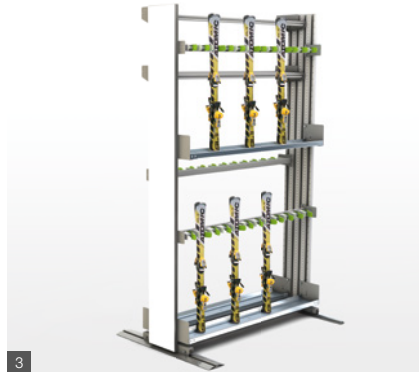
Compelling details.

Two types of Easystore Flex storage systems are available:

- Ski racks of sendzimir-galvanized panel-sheet **1** – ideal for the back-of-shop area
- Ski racks of sendzimir-galvanized panel-sheet with additional powder coating **2** – for a professional appearance



For an individual design, the ski rack's vertical supports can be equipped with narrow **3** or wide **4** front panels at the front and rear. We are happy to assist you with the design, including suggestions for the graphics.



FOM – Functional. Optimal. Maximal.

For the front panel, there are three options to choose from:

- Functional: The entry-level model in trendy white
- Optimal: A selection of wood designs
- Maximal: Panels printed with your logo and professional design or fabric covering



Functional



Optimal



Maximal

Easystore Flex – flexibly combining modules.



The individual storage and drying modules can be combined and arranged into individual storage systems – even within the same rack.



From planning to implementation. Benefit from our experience.

WINTERSTEIGER supports you from the planning phase all the way to implementation of your perfect rental and depot facility. An optimal organization – from the arrival of the customer to the issuing of the sports equipment – provides faster turnaround times and makes the work easier.



2D planning



3D planning



Implementation

Module Ski Straight

The versatile solution for rental and workshop shop.

The proven 3-point clamping system for storing skis of all kinds (alpine, rocker, free ride, cross-country) as well as for snowboards and various fun sports equipment.

The ski can be quickly placed into the ski rack and removed just as easily.

By mounting an additional safety bar for the skis and special wheels, the Flex Module Ski Straight can also be converted to a mobile workshop rack for transporting the sports equipment outdoors **1**.

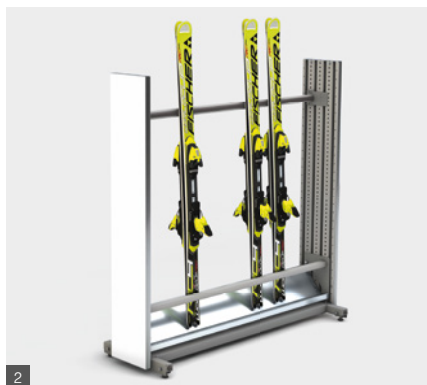
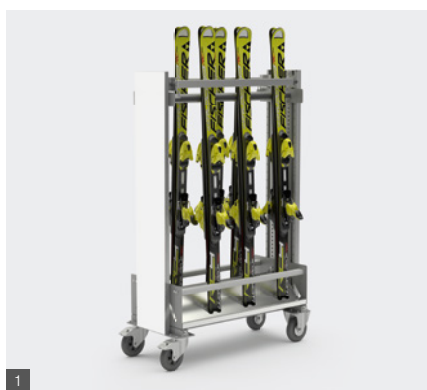
If required, the Ski Module Straight can be used as a presentation stand, both single-sided **2** and double-sided.

The Flex Module Ski Straight can be combined with many other modules of the Easystore Flex storage systems.

- Storage regardless of ski width
- Easily adjusted for storing twin tip skis

Options:

- Additional shelves (even dryer modules)
- Transport securing device with nylon strap
- Transport securing device with lockable bar, which is ideal when presenting skis in store fronts and entrances
- Castor wheels for outdoor use



Module Ski Straight and Module Ski 20°
Type: powder-coated, wide front panel, Functional

A strong partner
in everyday use.

Some possible combinations:

- Shelves for storing or drying boots and helmets **3**
- Module Universal Hanging for poles **4** or children's skis
- Helmet holder
- Module Ski Straight or Module Ski 20° with Easyclip for children's skis

Capacities and dimensions Module Ski Straight double-sided

1 level

Width: 50 cm (20")
Height: 154 cm (61")

Length in cm (inch)	Pairs of skis (ski width 115 mm)
107 (42")	16
155 (61")	24
173 (68")	28
207 (81")	34
253 (99")	42
303 (119")	50

2 levels

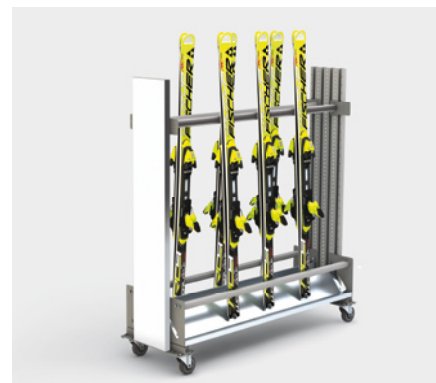
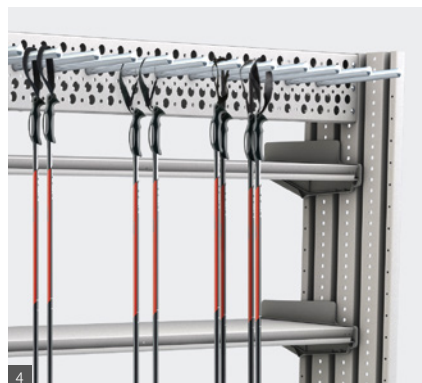
Width: 50 cm (20")
Height: 244/274 cm (96"/108")

Length in cm (inch)	Pairs of skis (ski width 100 mm)
107 (42")	36
155 (61")	56
173 (68")	64
207 (81")	76
253 (99")	96
303 (119")	116

The capacities are standard values and may vary according to the type of stored sports equipment.



Module Ski Straight with modules for Boots/Helmets
Type: powder-coated, wide front panel, Functional



Module Ski 20° with Easyclip

Attractive presentation and systematic organization.

The clip system for quickly fastening the ski and releasing it just as easily.

Four adjustments allow storing skis from 59 to 144 mm in width.

The Easyclip **1** is the only ski clip that can easily accept standard skis as well as the widest free ride skis.

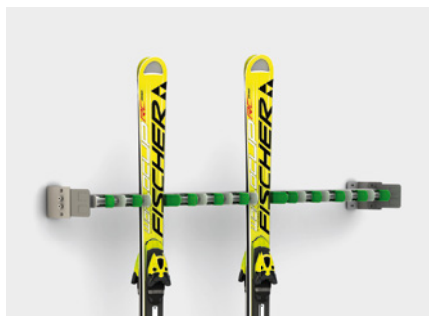
The lettering system **2** for space numbering is ideal for use in the valet and depot.

The Flex Module Ski 20° can be combined with many other modules of the Easystore Flex storage systems.

- Attractive presentation of the skis – even for twin tips
- Ideal for use in the valet and depot thanks to the fixed partitioning

Optional:

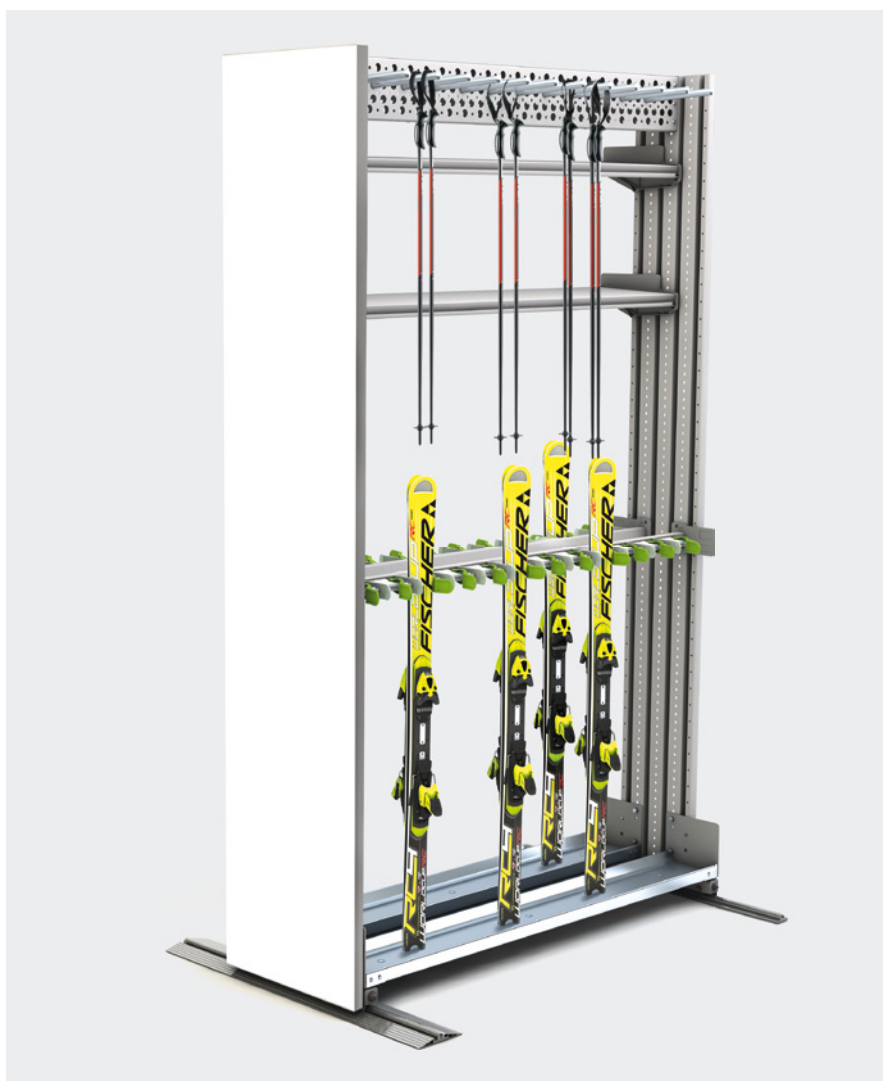
- Additional shelves (even dryer modules)



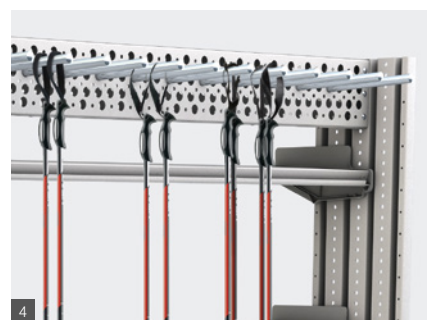
Module Ski 20° and Module Ski Straight
Type: powder-coated, wide front panel, Functional

Some possible combinations:

- Shelves for storing or drying boots and helmets **3**
- Module Universal Hanging for poles or **4** children's skis
- Helmet holder
- Module Ski 20° with Easyclip for children's skis **5**



Module Ski 20° with Module Universal Hanging for poles and Module Ski 20° with modules for Boots/Helmets
Type: powder-coated, wide front panel, Functional



Capacities and dimensions Module Ski 20° double-sided

1 level

Width: 50 cm (20")
Height: 154 cm (61")

Length in cm (inch)	Pairs of skis (ski clip width 115 mm)	Pairs of skis (ski clip width 125 mm)
107 (42")	16	14
155 (61")	24	22
173 (68")	28	26
207 (81")	34	30
253 (99")	42	38
303 (119")	50	46

2 levels

Width: 50 cm (20")
Height: 244/274 cm (96"/108")

Length in cm (inch)	Pairs of skis (ski clip width 115 mm)	Pairs of skis (ski clip width 125 mm)
107 (42")	32	28
155 (61")	48	44
173 (68")	56	52
207 (81")	68	60
253 (99")	84	76
303 (119")	100	92

The capacities are standard values and may vary according to the type of stored sports equipment.

Module Snowboard Vertical

All snowboards in the smallest space.

Depending on space requirements, the holders can be mounted for snowboards with or without bindings.

If required, the bindings can be stored in additional matching boxes.

The Flex Module Snowboard Vertical can be combined with many other modules of the Easystore Flex storage systems.

- Adjustable holders for snowboards with or without bindings
- Self-locking safety latch firmly holds the snowboards

Options:

- Boxes or shelves for storing bindings
- Also suitable for storing cross-country skis ¹



Module Snowboard Vertical with box for snowboard bindings including water pan
Type: powder-coated, wide front panel, Functional

Some possible combinations:

- Boxes for snowboard bindings
- Shelves for storing boots, bindings or helmets
- Shelves for drying boots or helmet
- Module Snowboard Vertical for children's snowboards



Module Snowboard Vertical with modules Boots/Helmets for snowboard bindings including water pan
Type: powder-coated, wide front panel, Functional

Capacities and dimensions Module Snowboard Vertical double-sided

1 level			
Width: 75 cm (30") Height: 204 cm (81")			
Length in cm (inch)	Snowboards without bindings	Snowboards with soft bindings	Cross country skis
155 (61")	76	20	96
173 (68")	86	22	108
207 (81")	104	26	132
253 (99")	130	34	156
303 (119")	158	40	192

2 levels		
Width: 75 cm (30") Height: 244/274 cm (96"/108")		
Length in cm (inch)	Snowboards without bindings	Snowboards with soft bindings
155 (61")	152	40
173 (68")	172	44
207 (81")	208	52
253 (99")	260	68
303 (119")	316	80

The capacities are standard values and may vary according to the type of stored sports equipment.

Module Snowboard Horizontal

Attractive presentation and maximum space utilization.

The forks are easy to mount and can be flexibly adjusted – for the optimum use of the available height.

Depending on how they are mounted, the multifunctional forks can be used for storing snowboards with **1** or without **2** bindings.

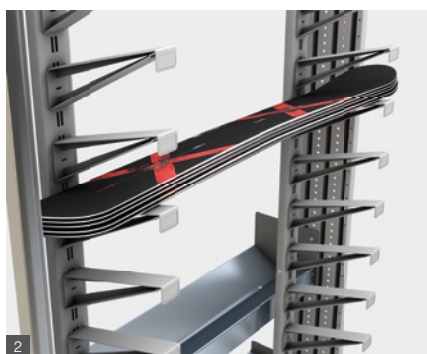
If required, the bindings can be stored in appropriate boxes **3**.

The Flex Module Snowboard Horizontal can be combined with many other modules of the Easystore Flex storage systems.

- The multifunctional forks can be used for stacking snowboards, for presentation purposes and in valet and depot

Optional:

- Boxes for storing bindings



Module Snowboard Horizontal including water pan
Type: powder-coated, wide front panel, Functional

Snowboards conveniently stored and effectively presented.

Some possible combinations:

- Boxes for snowboard bindings
- Shelves for storing boots, bindings or helmets
- Shelves for drying boots or helmets

Capacities and dimensions Module Snowboard Horizontal double-sided

System height 200 cm		
Width: 75 cm (30") Height: 204 cm (81")		
Length in cm (inch)	Snowboards without bindings	Snowboards with soft bindings
155 (61")	144	36
173 (68")	144	36
207 (81")	144	36 / 68*
253 (99")	144	68
303 (119")	144 / 272*	68 / 100*

System height 240 cm		
Width: 75 cm (30") Height: 244 cm (96")		
Length in cm (inch)	Snowboards without bindings	Snowboards with soft bindings
155 (61")	176	44
173 (68")	176	44
207 (81")	176	44 / 84*
253 (99")	176	84
303 (119")	176 / 336*	84 / 124*

* Optionally with additional vertical supports

The capacities are standard values and may vary according to the type of stored sports equipment.



Module Universal Hanging

Compact and versatile system for all kinds of sports equipment.

The modular system means there is room for skis, snowboards, poles, and different sports equipment and clothing in a very small space.

Thanks to the different mounting position, the same crossbars and forks can be used for storing all kinds of sports equipment. There are three types of forks to choose from.

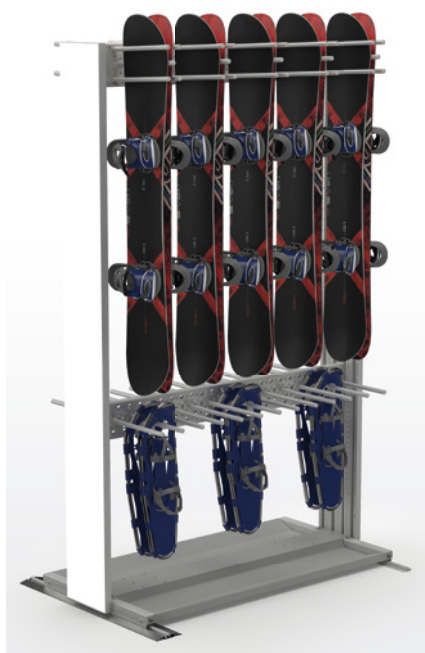
Both the crossbars and the forks are easy to mount and adjust.

Fitted with a suitable crossbars, the hanging system can also be used for clothing.

The Flex Module Universal Hanging can be combined with many of the other Easystore Flex storage system modules.

Option:

- Three different types of forks
 - Forks for skis and ski poles (2 lengths)
 - Forks for snowboards



Module Universal Hanging for children's skis and poles, including water pan
Type: powder-coated, wide front panel, Functional



Module Universal Hanging for skis, including water pan
Type: powder-coated, wide front panel, Functional

Capacities and dimensions Module Universal Hanging double-sided

1 level

Width: 75/89 cm (30/35"), height: 204 cm (80")

Length in cm	Pairs of skis					Pairs of poles	Snowboard	
	Adults ^A	Children ^B Forks L355	Children ^B Forks L425	Cross-country ^C Forks L355	Cross-country ^C Forks L425		Without binding	With binding
155 (61")	36	48	64	120	140	192	32	20
173 (68")	42	54	72	132	154	216	36	24
207 (81")	54	66	88	156	182	276	44	28
253 (99")	66	78	104	192	224	336	56	32
303 (119")	78	96	128	240	280	408	64	40

2 levels

Width: 75/89 cm (30/35"), height: 244/274 cm (96"/108")

Length in cm	Pairs of skis			Pairs of poles
	Adults ^A	Children ^B Forks L355	Children ^B Forks L425	
155 (61")	66	90	120	384
173 (68")	78	102	136	432
207 (81")	102	126	168	552
253 (99")	126	150	200	672
303 (119")	150	186	248	816

* **Base of calculation A:** Ski width 115 mm, width including binding 220 mm; **B:** Ski width 100 mm, width including binding 190 mm; **C:** Ski width 50 mm

The capacities are standard values and may vary according to the type of stored sports equipment.

Some possible combinations:

- Shelves for storing or drying boots and helmets
- Module Ski Straight or Module Ski 20° with Easyclip
- Module Snowboard Vertical
- Bars for hangers for easy storage of skiwear or use as a coatrack **1**



Modules for wall mounting

Optimal use of the space.

The individual cross members can also be wall mounted.



Ski pole stands

Fast and easy access.

One-sided stands with height-adjustable crossbars.

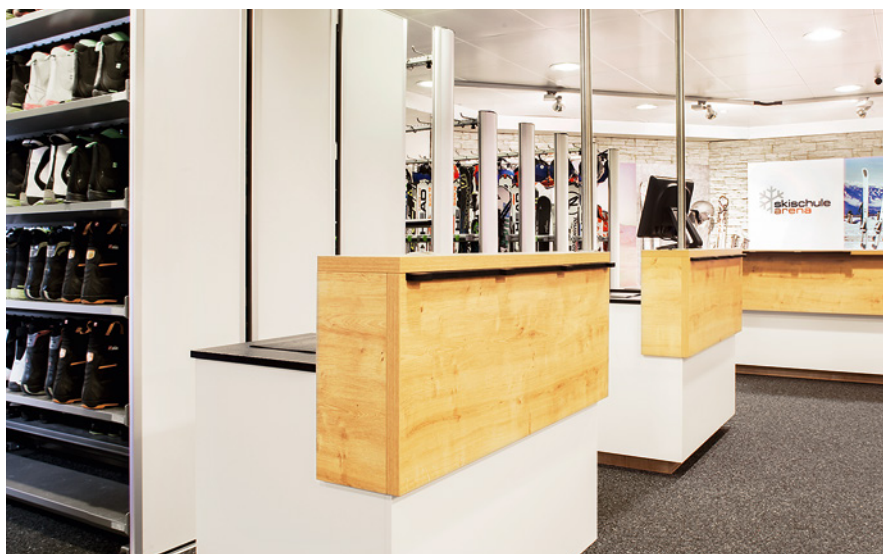
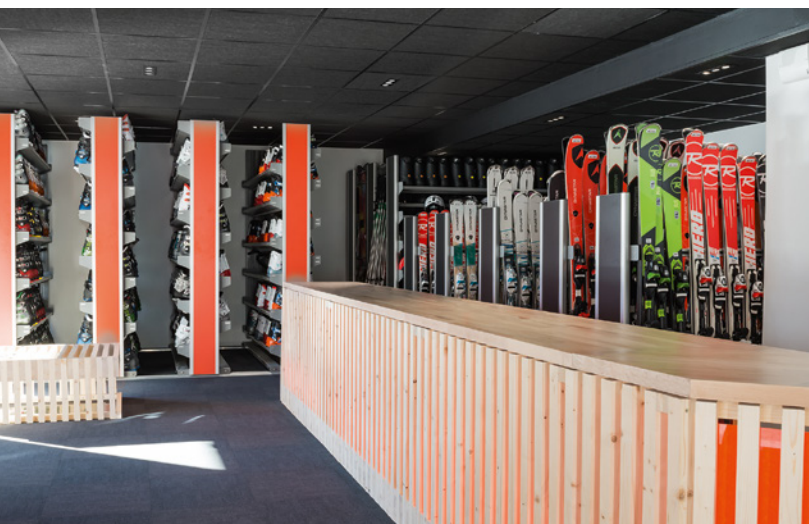
Capacities and dimensions ski pole stands

Length in cm	Width: 80 cm (32")	
	1 level	2 levels
	Height 154 cm (60")	Height 244 / 274 cm (96"/108")
Pairs of ski poles		
53 (21")	70	140
107 (42")	168	336
155 (61")	266	532

The capacities are standard values and may vary according to the type of stored sports equipment.







Module Boots/Helmets

Boots and helmets at a glance.

The shelves can be adjusted in height. Whether boots, helmets **1** or other sports equipment **2** – everything is stored in its place.

By using adapters, the module can be converted for storing ice skates.

The Flex Module Boots/Helmets can be combined with many other modules of the Easystore Flex storage systems.

- Efficient use of space through flexible height adjustment
- Versatile

Options:

- Additional shelves (even dryer modules)
- Adapter for storing ice skates **3**



Modules Boots/Helmets
Type: powder-coated, wide front panel, Functional

Some possible combinations:

- Module Drying Premia for quickly drying boots or helmets ⁴
- Helmet holder
- Module Universal Hanging for skis or poles
- Module Ski Straight or Module Ski 20° with Easyclip
- Module Snowboard Vertical



4

Module Drying Premia and modules Boots/Helmets, including water pan
Type: powder-coated, narrow front panel, Functional

Capacities and dimensions Module Boots/Helmets double-sided

10 shelves

Width: 50 cm (20")
Height: 204 cm (81")

Length in cm (inch)	Pairs of boots size 27.5 MP	Helmets size M*
107 (42")	30	48
155 (61")	50	72
173 (68")	60	84
207 (81")	80	96
253 (99")	90	120
303 (119")	110	144

* Calculated for 12 shelves

12 shelves

Width: 50 cm (20")
Height: 244 cm (96")

Length in cm (inch)	Pairs of boots size 27.5 MP	Helmets size M*
107 (42")	36	60
155 (61")	60	90
173 (68")	72	105
207 (81")	96	120
253 (99")	108	150
303 (119")	132	180

* Calculated for 15 shelves

The capacities are standard values and may vary according to the type of stored sports equipment.

Module Drying Optima

Saves space and energy in both rental and depot.

The flexible system for drying by ambient or heated air.

The sophisticated rack concept makes the best use of available space with height-adjustable shelves.

Individually programmable shelves allow an energy-efficient operation. The optimized air flow system ensures consistent drying. Optional ionization cleans the air – for a good, pleasant indoor climate.

The unit is easy to operate using an analog timer clock **1**.

The module can easily be converted to a universal drying system, by mounting shelves for drying helmets or adding adapters for ice skates.

The Flex Module Drying Optima can be combined with many other modules of the Easystore Flex storage systems.

- Sophisticated rack concept for best use of space
- Efficient use of energy through individually programmable shelves

Options:

- Shelves for drying helmets **2**
- Adapter for ice skates **3**
- Ionization for fresh ambient air



Modules Drying Optima
Type: powder-coated, wide front panel, Functional

Drying boots and helmets – reliably and consistently.

Some possible combinations:

- Crossbar for clothing
- Module Universal Hanging for skis or poles
- Module Ski Straight or Module Ski 20° with Easyclip
- Module Snowboard Vertical



Capacities and dimensions Module Drying Optima double-sided

8 shelves

Width: 50 cm (20")
Height: 204 cm (81")

Length in cm (inch)	Pairs of boots size 27.5 MP	Helmets size M*
155 (61")	40	60
173 (68")	48	70
207 (81")	64	80
253 (99")	72	100
303 (119")	88	120

* Calculated for 10 shelves

10 shelves

Width: 50 cm (20")
Height: 244 cm (96")

Length in cm (inch)	Pairs of boots size 27.5 MP	Helmets size M*
155 (61")	50	72
173 (68")	60	84
207 (81")	80	96
253 (99")	90	120
303 (119")	110	144

* Calculated for 12 shelves

The capacities are standard values and may vary according to the type of stored sports equipment.

Direct connections per shelf or via control unit:
Supply voltage: 208 - 230 V 1 AC 50/60 Hz

Output per shelf	For systems up to 2.0 m	For systems from 2.5 m
Ambient air	22 W	44 W
Warm air	192 W	264 W

Example:
12 Optima shelves, system 1.5 m: 264/2304 W

Module Drying Premia

High-end in both space efficiency and technology.

An efficient system with warm air drying.

The sophisticated rack concept and the new level angle make the best use of available space.

Individually programmable shelves allow an energy-efficient operation. The optimized air flow system ensures consistent drying. Optional ionization cleans the air – for a good, pleasant indoor climate.

The unit is easily operated by an analog timer clock ¹ or by a programmable control unit ².

The angled levels can be optionally equipped with nozzles for drying helmets.

The Flex Module Drying Premia can be combined with many other modules of the Easystore Flex storage systems.

- Sophisticated rack concept for the best use of space
- Efficient use of energy through individually programmable shelves

Options:

- Nozzles for drying helmets
- Ionization for fresh ambient air



Modules Drying Premia for boots and helmets
Type: powder-coated, wide front panel, Functional

Offers compelling practical details.

Some possible combinations:

- Shelves for storing boots and helmets ³
- Module Universal Hanging for skis or poles
- Module Ski Straight or Module Ski 20° with Easyclip
- Module Snowboard Vertical



3

Capacities and dimensions Module Drying Premia double-sided

10 levels

Width: 75 cm (20")
Height: 204 cm (81")

Length in cm (inch)	Pairs of boots
155 (61")	50
173 (68")	55
207 (81")	70
253 (99")	80
303 (119")	100

12 levels

Width: 75 cm (20")
Height: 244 cm (96")

Length in cm (inch)	Pairs of boots
155 (61")	60
173 (68")	66
207 (81")	84
253 (99")	96
303 (119")	120

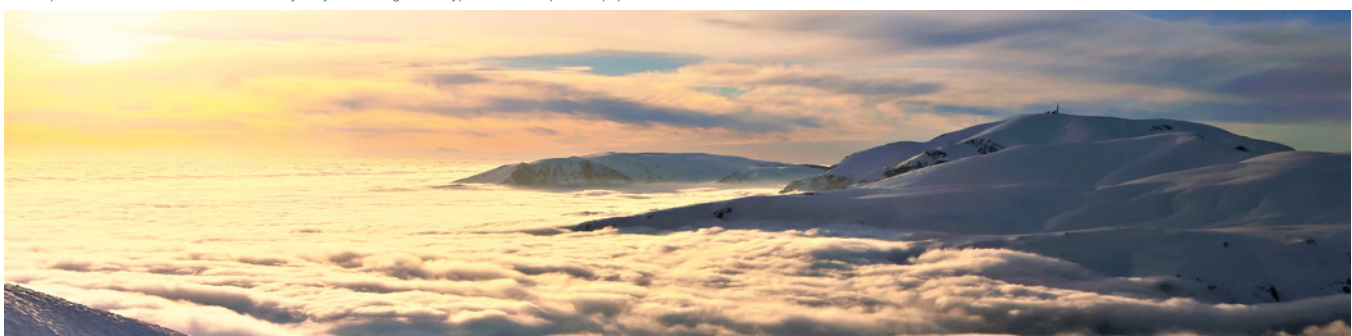
The capacities are standard values and may vary according to the type of stored sports equipment.

Direct connections per shelf:
Supply voltage: 208 - 230 V 1 AC 50/60 Hz

Connected via control unit:
Supply voltage: 208 - 230 V 1/3 AC 50/60 Hz or
400 V 3 + N AC 50/60 Hz

Output per shelf	For systems up to 2.0 m	For systems from 2.5 m
Warm air	572 W	704 W

Example:
10 Premia levels, system 2.0 m: 5720 W



Boot/Helmet Dryer Innova

Space-saving, economical and effective drying.

The single-sided warm air drying for wall mounting or with base stand.

Performance features:

- Simple operation via analog timer
- Central heating, switchable in 2 stages
- Disinfect the air by ozone lamp
- Deodorization with fragrance
- The drying time is approx. 2 to 3

- hours, depending on the ambient room temperature and the air and shoe moisture
- Ambient temperature: +18 to 40°C
- Humidity: 30% - 70%
- Duration of effect of fragrance: in 5-hour operation approx. 2 months

Options:

- Base stand
- Control cover



5 pairs of shoes



10 pairs of shoes



15 pairs of shoes



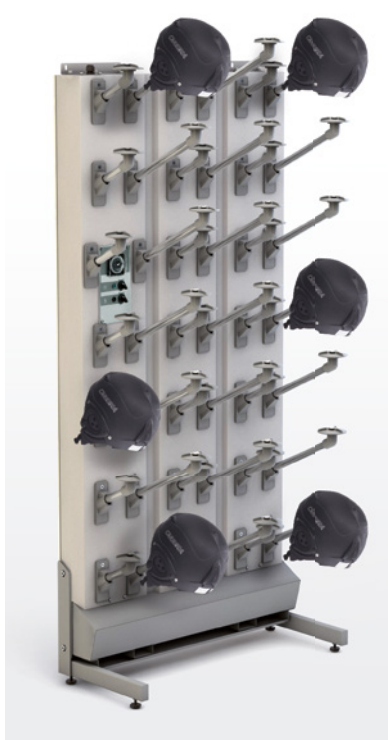
20 pairs of shoes

Technical Data

Name	Dimensions (H x W x D in cm)	Nominal voltage, frequency, power, nominal current, fuse protection min. – max.	Heating capacity 230 V / 110 V
Innova 5 pairs	199 x 32 x 41	1 AC 208 – 230 V, 50/60 Hz, 1,1 kW, 4,8 A, 10/16 A or 1 AC 110 V, 60Hz, 0,7 kW, 6,5 A, 10/16 A	Level 1: 500 W / 350 W Level 2: 1000 W / 700 W
Innova 10 pairs	199 x 62 x 41	1 AC 208 – 230 V, 50/60 Hz, 1,1 kW, 4,8 A, 10/16 A or 1 AC 110 V, 60 Hz, 0,7 kW, 6,5 A, 10/16 A	Level 1: 500 W / 350 W Level 2: 1000 W / 700 W
Innova 15 pairs	199 x 92 x 41	1 AC 208 – 230 V, 50/60 Hz, 2,2 kW, 9,6 A, 10/16 A or 1 AC 110 V, 60 Hz, 1,4 kW, 12,9 A, 15/16 A	Level 1: 1000 W / 700 W Level 2: 1000 W / 700 W
Innova 20 pairs	199 x 122 x 41	1 AC 208 – 230 V, 50/60 Hz, 2,2 kW, 9,6 A, 10/16 A or 1 AC 110 V, 60 Hz, 1,4 kW, 12,9 A, 15/16 A	Level 1: 500 W / 350 W Level 2: 2000 W / 1400 W



14 helmets



42 helmets

Technical Data

Name	Dimensions (H x W x D in cm)	Nominal voltage, frequency, power, nominal current, fuse protection min. – max.	Heating capacity 230 V / 110 V
Innova 14 helmets	202 x 32 x 47	1 AC 208 – 230 V, 50/60 Hz, 1,1 kW, 4,8 A, 10/16 A or 1 AC 110 V, 60 Hz, 0,7 kW, 6,5 A, 10/16 A	Level 1: 500 W / 350 W Level 2: 1000 W / 700 W
Innova 42 helmets	202 x 92 x 47	1 AC 208 – 230 V, 50/60 Hz, 2,2 kW, 9,6 A, 10/16 A or 1 AC 110 V, 60 Hz, 1,4 kW, 12,9 A, 15/16 A	Level 1: 500 W / 350 W Level 2: 2000 W / 1400 W



**Easystore Flex –
more than just an
eye-catcher.**

Easystore Flex system lengths and heights.

The criteria for choosing the system lengths and heights? To make best use of the available room height and, accordingly, the optimal space requirements.

The Easystore Flex storage systems are compatible with the previous WINTERSTEIGER system lengths.

System lengths:

53 cm* (21")
107 cm* (42")
155 cm (61")
173 cm (68")
207 cm (81")
253 cm (100")
303 cm (119")

System heights**:

150 cm (59")
200 cm (79")
240 cm (95")
270 cm* (106")

* Limited selection of modules
** Special heights on request.



Easystore Flex types and features.

The Easystore Flex storage systems can be used with these types of mounting:

Model with robust, easy-running rail wheels.

Standard rack-on-rail system or rails with trip guard for safe working.

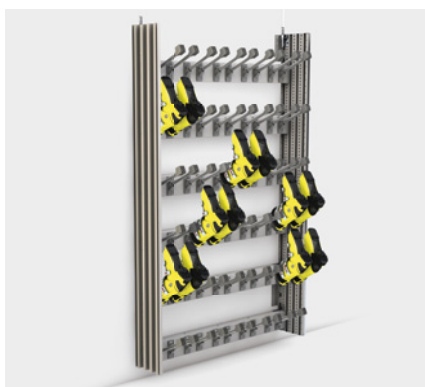
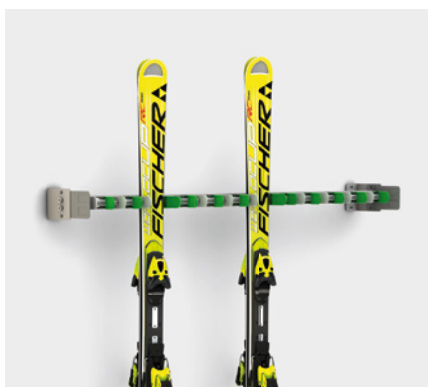


Model with various castor wheels in different sizes.



Model for wall mounting.

The modules can be mounted either directly to the wall or together with the rack's vertical supports.



Model with feet.



Drainage for melting snow.

The specific shape of the shelves for boots and helmets carries the water away from each level to floor. The optional water pans – which can be additionally equipped with shock-absorbing and sound-resistant rubber mats – collect the water.



Water pan with rubber mat



Boot shelf with gully



Easystore shop furniture

An excellent combination of design, ergonomics,
and flexibility.

The minimalist, modern design of the Easystore shop furniture allows it to be seamlessly integrated into every store concept – the sophisticated design can be adapted to suit every customer's needs and environment. Materials and function are also perfectly matched to the requirements and processes.

With Easystore shop furniture, the sky is the limit in terms of appearance and materials, allowing you to create the perfect atmosphere for you and your customers.

Für detailliertere Beschreibungen fordern Sie bitte unser Prospekt Easystore Shop Möbel an!





Easystore depot solutions Tailor-made – the perfect fit for everyone.

Easystore depot systems by WINTERSTEIGER make an impression with a state-of-the-art design, maximum flexibility and stability, and maximum storage capacity on a minimal footprint.

Thanks to our partnership with Steurer Systems, our range of rental, depot, and drying systems has become even more versatile. We plan storage lockers individually based on your requirements, taking maximum space utilization, drying, and disinfection into account, while at the same time catering to your access system needs.

Our Easyrent rental, storage and POS software makes storage management unbelievably fast and easy. It also features a simple module for managing and lock control for the Easystore locker systems. On top of this, you can choose your own colors, logos, visuals and labeling to customize the locker design.

Benefit from our experience. WINTERSTEIGER supports you from the planning phase all the way to implementation of your perfect storage facility.

For a detailed description, please ask for our Easystore Depot Systems brochure!



Success begins with the right decisions.
At the right time. We look forward to you!



First Class
WINTERSTEIGER
Rental & Depot Solutions

Headquarters:

Austria: WINTERSTEIGER AG, 4910 Ried, Dimmelstrasse 9,
Tel.: +43 7752 919-0, Fax: +43 7752 919-52,
sports@wintersteiger.at

For customers in Germany only: Tel.: +49 3628 66399-1970,
Fax: +49 3628 66399-1973

International Companies:

Canada: WINTERSTEIGER Inc., CDN-Laval Q.C. H7L 5A1,
964 Bergar Street, Tel.: +1 450 6637800, Fax: +1 450 6632896,
info@canada.wintersteiger.com

France: SKID-WINTERSTEIGER S.A.S.,
Parc d'Activités Alpespace - 102 voie Galilée,
73800 Ste. Hélène du Lac, Tel. : +33 479 25-1160,
Fax : +33 479 25-1161, office@skid-wintersteiger.com

Italy: WINTERSTEIGER Italia s.r.l., 39036 Badia (BZ),
Fraz. La Villa – Strada Ninz 82, Tel.: +39 0471 844 186,
Fax: +39 0471 188 1664, info@wintersteiger.it

Russia: OOO WINTERSTEIGER, Krzhizhanovsky Str. 14, Build. 3,
117218 Moscow, Russia, Tel.: +7 495 645 84 91,
Fax: +7 495 645 84 92, office@wintersteiger.ru

Switzerland: WINTERSTEIGER Schweiz AG, 6331 Hünenberg,
Chamerstrasse 44, Tel.: +41 41 780 23 22, Fax: +41 41 780 23 90,
office@wintersteiger.ch

USA: WINTERSTEIGER Inc., 4705 Amelia Earhart Drive,
Salt Lake City, UT 84116-2876, Tel.: +1 801 355-6550,
Fax: +1 801 355-6541, mailbox@wintersteiger.com

Representations:

Argentina, Australia, Benelux, Bosnia Herzegovina, Bulgaria, Chile, China, Croatia, Czech Republic, Denmark, Finland, Great Britain, Hungary, Japan, Macedonia, New Zealand, Norway, Poland, Romania, Serbia, Slovakia, Slovenia, Spain, South Korea, Sweden, Turkey. Contact details for our representatives are available on www.wintersteiger.com/sports.