



FIVEFINGERS

MOVE FREELY

PRODUCT CATALOGUE 2023





# OUR FOUNDATION

The strength of the human foot lies in its structural capability to adapt - depending on the movement, it changes from a very sturdy and efficient shock absorber, to a reactive and powerful propulsion source.

There is an elementary function that is often overlooked; the foot performs as a sensory organ.

Due to its flexibility and natural articulation, it can adapt and sense the ground with every step, much like the characteristics of our hands. The real-time data our foot collects and delivers to the brain as we step, helps us with instinctive and natural human movement.

The mission of Vibram FiveFingers is to engineer essential protective\* footwear always aiming at allowing the human foot to move naturally and uncompromised.

**The human body is strong, by nature.**





A person is running on a dirt path in a forest. They are wearing dark-colored Vibram FiveFingers shoes. The background is a dense forest with tall trees and sunlight filtering through the canopy. The person's legs and feet are in motion, creating a sense of speed and movement.

# OUR PRODUCT

**Vibram FiveFingers is a protective tool and “articulated” rubber sole in the shape of the human foot.** The glove-like upper respects the natural functionality of the foot, allowing you to feel the ground naturally with a level of protection\*.

**2023: the next level of naturally “articulated” footwear.**



# LINE LIST

MAXIMAL, MEDIUM, AND MODERATE GROUND FEEL PRODUCTS

## MAXIMAL GROUND FEEL

**Sole thickness:** 3,00 to 3,50 mm

Our thinnest soles, designed to provide maximum articulation and ground feel combined with essential protection.

## MEDIUM GROUND FEEL

**Sole thickness:** From 5,00 to 5,70 mm

Medium-thickness soles, designed to provide high articulation and ground feel combined with essential protection.

## MODERATE GROUND FEEL

**Sole thickness:** From 6,00 to 8,50 mm

Our thickest soles, which are still minimal when compared to traditional shoes. They provide excellent articulation and ground feel combined with comfortable protection.

**Caution:** as used in this catalogue, “protection” means only a rubber barrier between ground and the foot. Vibram FiveFingers® are not orthopedic or safety footwear and should not be used as such or for playing active sport activities involving significant stress for feet and lower limbs.





## GROUND FEEL LEVEL

	<b>MAXIMAL GROUND FEEL</b> <b>Sole thickness: 3,00 to 3,50 mm</b>	<b>MEDIUM GROUND FEEL</b> <b>Sole thickness: From 5,00 to 5,70 mm</b>	<b>MODERATE GROUND FEEL</b> <b>Sole thickness: From 6,00 to 8,50 mm</b>
<b>TRAINING</b>		V-SOUL   KSO EVO   ELX KNIT   KSO EVO KIDS    	V-RUN   V-RUN RETRO   KMD SPORT 2.0   V-TRAIN 2.0    
<b>OUTDOOR</b>		V-ALPHA   V-TRAIL 2.0  	SPYRIDON EVO   V-TREK   V-TREK INS.   
<b>WATER</b>		V-AQUA 	
<b>LIFESTYLE</b>	CVT LB   V-NEOP   KSO ECO     KSO ECO WOOL   VI-B ECO  		CVT-LEATHER 
<b>ORIGINALS</b>	CLASSIC ECO   KSO VINTAGE  		
<b>PERFORMANCE SOCKS</b>	ATHLETIC NO SHOW 	WOOL BLEND CREW 	GHOST 

# YOUR PLAYGROUNDS OUR TECHNOLOGY



## LITEBASE

Vibram LITEBASE offers lightness without compromise, resulting in a durable outsole that is up to 30% lighter and 50% slimmer without sacrificing performance.

**MODEL FT. SOLE:**  
CVT LB



## ECOSTEP NATURAL

Vibram ECOSTEP Natural is a rubber compound constructed from more than 90% natural ingredients, while maintaining the same Vibram standard of quality, grip and performance. EcoStep Natural offers the same grip and durability found with other Vibram compounds, allowing for superior traction on urban surfaces.

**MODEL FT. SOLE:**  
KSO ECO, KSO ECO Wool, Vi-B ECO, Classic ECO



## XS TREK

Vibram XS TREK is a technical compound that allows great overall performance qualities, in particular flexibility and wet traction. Highly responsive to the various demands of life, XS TREK will carry you from the trail to the urban playground and even to the indoor activities, thanks to its non-marking feature.

**MODEL FT. SOLE:**  
CVT Leather, V-Train 2.0, KSO Evo, V-NEOP, KSO Vintage, EL-X Knit, V-Soul, KSO Evo Kids, KMD Sport 2.0



## XS RUN

Vibram XS RUN provides a maximal stable hardness across a broad temperature range and the softness of the compound allows for expansive ground contact and grip across lug surfaces. XS RUN also provides high grip on smooth surfaces.

**MODEL FT. SOLE:**  
V-Run







## MONT

Vibram MONT compound formulation is optimized for mountaineering, trekking, acrobatic, works, and motorbike racing. MONT is used to conquer the highest reliability on the most difficult terrains at low temperatures.

**MODEL FT. SOLE:**  
V-Run



## VI-LITE

Vibram VI-LITE features the ultimate in lightweight, shock, absorption cushioning, for maximum energy conservation.

**MODEL FT. SOLE:**  
V-Run, CVT Leather



## MEGAGRIP

Vibram MEGAGRIP offers excellent grip properties on both dry and wet terrains while maintaining a high level of durability. Developed for the user who frequently encounters slippery surfaces, MEGAGRIP offers an incomparable combination of grip and durability.

**MODEL FT. SOLE:**  
V-Trek, V-Aqua, V-Trail 2.0, V-Alpha, CVT LB



## MEGAGRIP 3D COCOON

3D COCOON embedded in the outsole, this thin and flexible mesh disperses ground pressure by distributing impact. Flexible but protective enough to traverse safely over uneven ground, the user experiences ground feedback with less bite.

**MODEL FT. SOLE:**  
V-Trail 2.0, Spyridon EVO



## ICETREK

Vibram ICETREK provides unparalleled grip on cold, icy, or snow covered surfaces. The soft rubber compound in combination with uniquely designed lugs allows ICETREK soles to move swiftly on various icy surfaces.

**MODEL FT. SOLE:**  
V- Trek Insulated

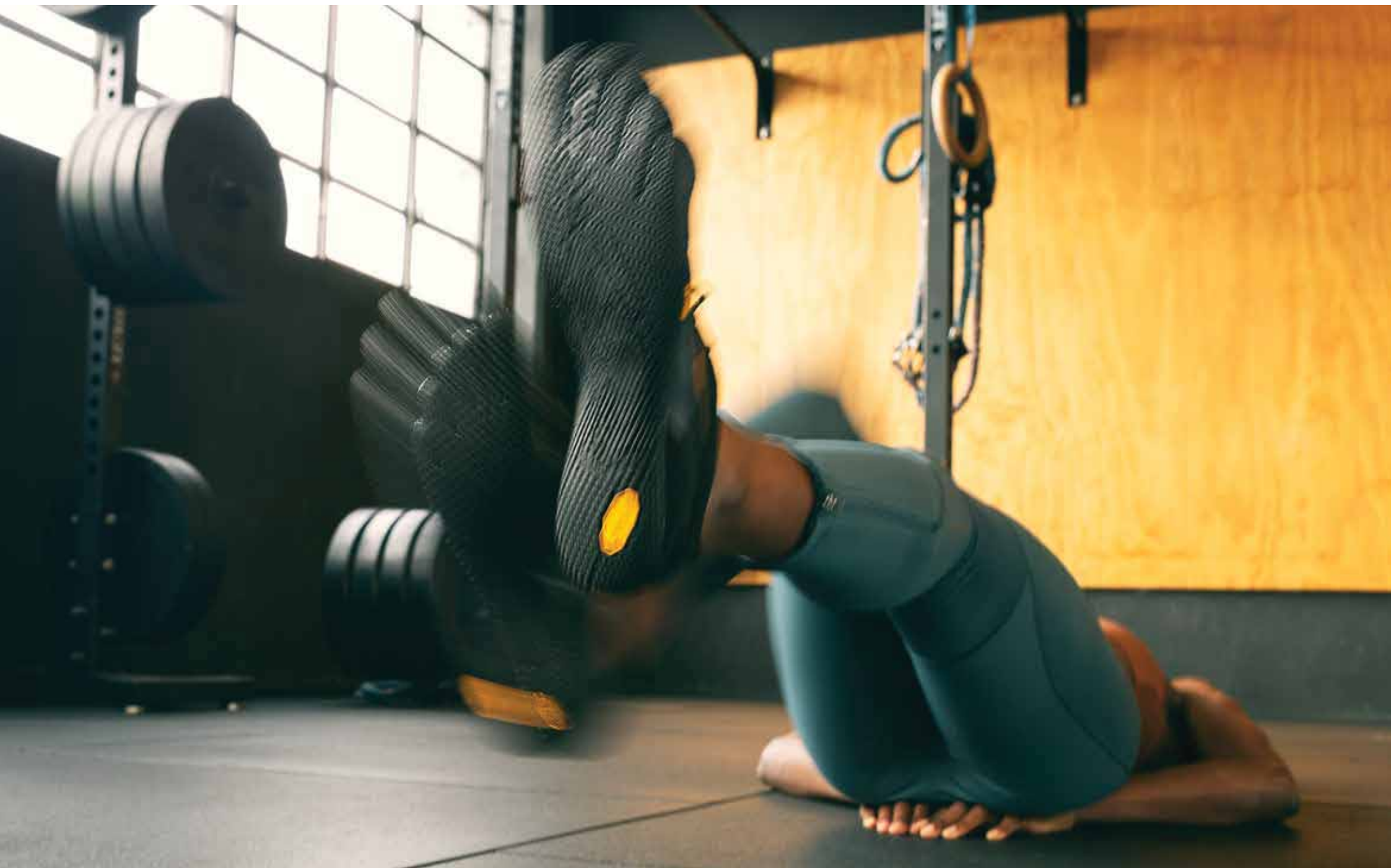


A high-angle, close-up photograph of a person's lower body and hands as they perform a deadlift. The person is wearing black athletic shoes and is positioned over a barbell with large black weight plates. The floor is a light-colored, textured gym mat. The lighting is dramatic, with strong shadows.

# TRAINING

Maximum proprioception  
for optimal human performance.





# V-SOUL

FEMININE INDOOR FITNESS

2 mm PU foam  
insole + Poly  
sockliner

Open, light and flexible.  
Adjustable, secure fit.  
Maximum articulation and ground feel.

This style is part of our Medium Ground Feel  
product philosophy.

-

## USAGE

Functional fitness, plyometrics, Pilates, yoga, etc.

## WEIGHT

W38= 3,2oz / 91gr

## CARE INSTRUCTION

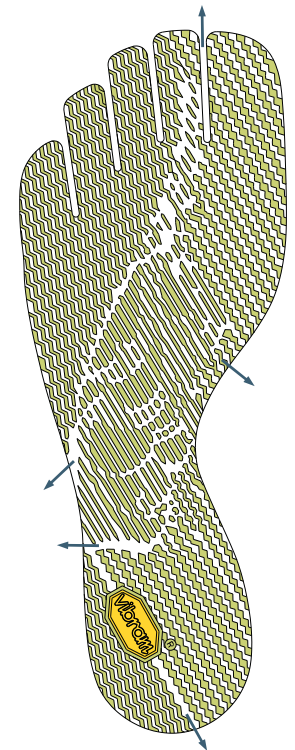
Machine Wash Cold / Air Dry

Shiny Polyester  
material

Hook & loop  
closure

3 mm  
rubber outsole  
compound:

**XS TREK**



- GRIP
- TRACTION
- STABILITY
- BRAKE
- CUSHIONING
- SELF CLEANING





## Women's



**18W7201**  
Black



**18W7202**  
Silver / Light Grey

# KSO EVO

THE UNIVERSAL, MINIMAL  
TRAINING TOOL

Maximum articulation and ground feel.  
Assured grip and essential protection\*.  
Light, airy and simple adjustable upper design.

This style is part of our Medium Ground Feel  
product philosophy.

-

## USAGE

Functional fitness, plyometrics, primal movements,  
balance and strengthening workouts

## WEIGHT

W38= 3,5oz / 99gr

M43= 4,9oz / 139gr

## CARE INSTRUCTION

Machine Wash Cold / Air Dry

Fast lacing

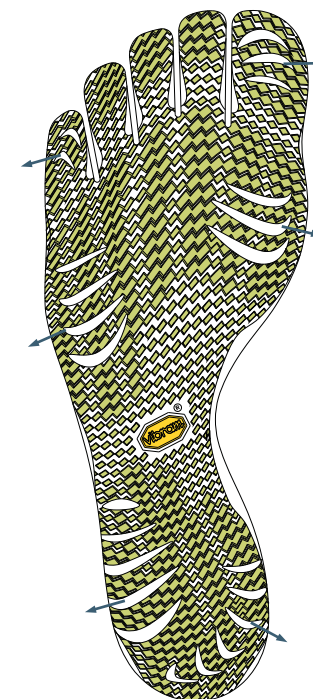


2 mm EVA  
insole + Dri-lex®  
sockliner

Polyester Mesh



PU Printing  
protection and  
reinforcement



- GRIP
- TRACTION
- STABILITY
- BRAKE
- CUSHIONING
- SELF CLEANING

3 mm  
rubber outsole  
compound:

**XS TREK**





## Women's



**14W0701**  
Black



**18W0701**  
Black / Rose



**21W0701**  
Grey / Orange

## Men's



**14M0701**  
Black



**18M0701**  
Black / Red



**21M0701**  
Grey / Orange

# EL-X KNIT

THE SOFT, COMFORTABLE  
SLIP-ON SOLUTION

The knitted upper of the EL-X Knit truly fits around the foot like a glove, while the super minimalist XS Trek outsole provides excellent ground feel with an optimal balance of traction and durability. Now in men's and women's versions.

This style is part of our Medium Ground Feel product philosophy.

-

## USAGE

Casual and travel

## WEIGHT

W38 = 3,88oz / 110gr

M43 = 4.94oz / 140gr

## CARE INSTRUCTION

Machine Wash Cold / Air Dry

Slip on

2 mm  
EVA insole

Knitted upper  
material

- GRIP
- TRACTION
- STABILITY
- BRAKE
- CUSHIONING
- SELF CLEANING

3 mm  
rubber outsole  
compound:  
**XS TREK**





## Women's



**23W8601**  
Black



**23W8602**  
Grey

## Men's



**23M8601**  
Black



**23M8602**  
Grey

# KSO EVO KIDS

THE UNIVERSAL, MINIMAL TOOL  
FOR TRAINING AND PLAY

Maximum articulation and ground feel.  
Assured grip and essential protection\*.  
Light, airy and simple adjustable upper design.

This style is part of our Medium Ground Feel  
product philosophy.

-

## USAGE

Functional fitness, primal movements (play),  
plyometrics, balance and strengthening workouts

## WEIGHT

W38= TBD

M43= TBD

## CARE INSTRUCTION

Machine Wash Cold / Air Dry

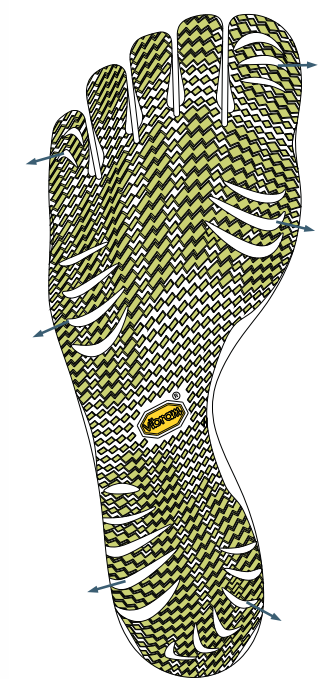
Fast lacing



2 mm EVA  
insole + Dri-lex®  
sockliner



Polyester Mesh  
material



- GRIP
- TRACTION
- STABILITY
- BRAKE
- CUSHIONING
- SELF CLEANING

3 mm  
rubber outsole  
compound:

**XS TREK**





Kid's



20K0701  
Black

# V-TRAIN 2.0

THE PERFECT TOOL FOR SERIOUS  
TRAINERS AND FUNCTIONAL ATHLETES

Good level of ground feel and protection\* with good toe articulation for great balance and active stability.

Upper construction specifically designed for heavy training, focused on durability and performance.

Distinctive rope traction lugs in the arch.

Updated panel lacing system with a Hook+Loop closure system, with new softer feel. Perfect for aggressive, lateral movements.

XS Trek rubber compound for all around performance both indoor and outdoor.

This style is part of our Moderate Ground Feel product philosophy.

-

## USAGE

Functional fitness, balance and strength workouts, powerlifting, and some running.

## WEIGHT

W38= 6,2oz / 177gr

M43= 7,8oz / 220gr

Lacing +  
hook&loop  
closure



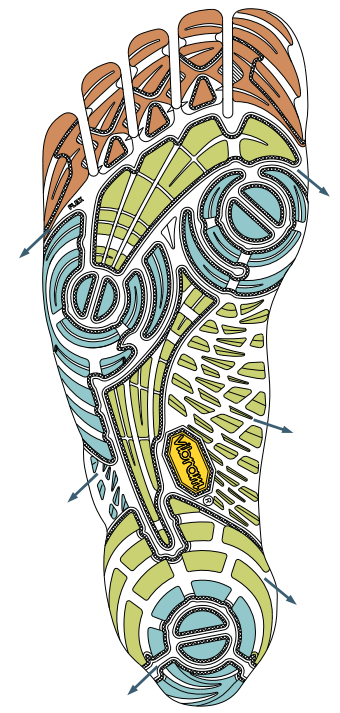
2 mm EVA  
insole +  
Polyester  
sockliner



Lateral TPU  
panels

Polyester fabric

Rope  
Traction lugs



- GRIP
- TRACTION
- STABILITY
- BRAKE
- CUSHIONING
- SELF CLEANING

4 mm  
rubber outsole  
compound:

**XS TREK**





## Women's



**20W7701**  
Black / Black



**20W7703**  
Black / Pink



**21W7701**  
Grey/Lime/Black



**21W7702**  
Grey / Camo

## Men's



**20M7701**  
Black / Black



**20M7703**  
Black / Blue



**21M7701**  
Grey/Lime/Black



**21M7702**  
Grey / Camo

# V-RUN

## THE NATURAL ROAD RUNNING AND FITNESS TOOL

Exceptionally lightweight and flexible.

Features a 4mm Vi-Lite midsole for an additional level of light cushioning.

Appropriate for transitioning from traditional to minimal running footwear.

Great for sprint training, even for those who run longer distances in more cushioned trainers.

Soft polyamide upper featuring strategically placed perforations for superior fit, breathability and comfort.

This style is part of our Moderate Ground Feel product philosophy.

-

### USAGE

Road running, treadmill running, general fitness.

### WEIGHT

W38= 3,74oz / 106gr

M43= 4,8oz / 136gr

### CARE INSTRUCTION

Machine Wash Cold / Air Dry

Perforations for Ventilation

Extra soft Polyester fabric

2 mm EVA insole + Dri-Lex® sockliner

4 mm midsole compound:

**VI-LITE**

2.5 mm rubber pieces compound:

**XS RUN**

2.5 mm rubber pieces / durable compound:

**MONT**



- GRIP
- TRACTION
- STABILITY
- BRAKE
- CUSHIONING
- SELF CLEANING





## Women's



**16W3105**  
Black / Yellow / Purple



**20W7003**  
Blue / Blue



**23W7003**  
Lime / Blue

## Men's



**16M3101**  
Black / Yellow



**20M7002**  
Blue / Black



**23M7002**  
Gold / Yellow / Black

# V-RUN RETRO

## THE NATURAL RUNNING AND FITNESS TOOL

V-Run Retro marks the return of the popular barefoot running shoe that started it all! Designed for all types of runners, this fan favorite is lightweight, comfortable, and flexible.

A sturdy 4mm Vibram XS Trek rubber outsole provides excellent grip on a variety of surfaces, while the foam insole, poly sockliner and minimal EVA arch support pad add to the shoe's overall comfort.

The soft nylon mesh upper material is breathable and feels great on the foot.

This style is part of our Moderate Ground Feel product philosophy.

-

### USAGE

Road running, treadmill running, general fitness.

### WEIGHT

W38= 5,7oz / 142gr

M43= 4,6oz / 184gr

### CARE INSTRUCTION

Machine Wash Cold / Air Dry

Fast lacing

Nylon mesh  
material

2mm PU foam  
insole + poly  
sockliner

4mm rubber  
sole + EVA arch  
compound:

**XS TREK**



- GRIP
- TRACTION
- STABILITY
- BRAKE
- CUSHIONING
- SELF-CLEANING





## Women's



**21W8001**  
Black / Grey



**21W8002**  
Black / Green / Black



**21W8003**  
Red / Black / Grey

## Men's



**21M8001**  
Black / Grey



**21M8002**  
Black / Green / Black



**21M8003**  
Red / Black / Grey

# KMD SPORT 2.0

THE VERSATILE, MINIMALIST  
TRAINING TOOL

Back to Crazy! This comfortable, versatile training shoe performs well in the gym and outdoors, and features a dual hook-and-loop strap closure system.

This style is part of our Moderate Ground Feel product philosophy.

Replica of the Komodo Sport style

-

## USAGE

Gym, functional fitness, balance and strengthening workouts.

## WEIGHT

W38= 3,6oz / 102gr

M43= 2,6oz / 74gr

## CARE INSTRUCTION

Machine Wash Cold / Air Dry

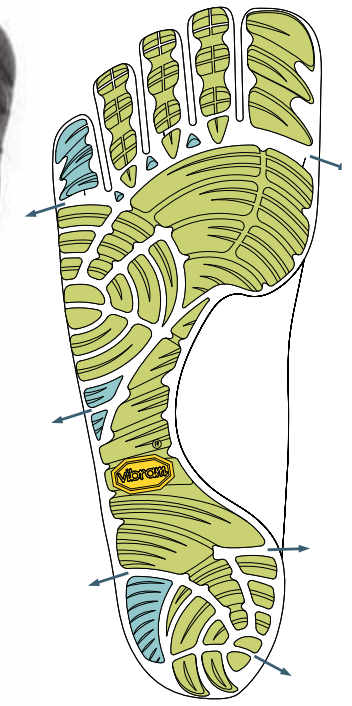
Dual  
hook-and-loop  
closure system



2 mm  
footbed



Soft microfiber  
material



- GRIP
- TRACTION
- STABILITY
- BRAKE
- CUSHIONING
- SELF CLEANING

4 mm  
rubber outsole  
compound:

**XS TREK**





## Women's



**21W3601**  
Black

## Men's



**21M3601**  
Black

## KMD SPORT

The original KMD SPORT is back.



**M3648**  
Yellow / Black / Silver



# OUTDOOR

Our natural playground.





Professional athlete, please don't imitate.



# V-ALPHA

## ESSENTIAL, MINIMAL OUTDOOR

100% true to our original philosophy: a protective\* tool for the foot that allows ground sensory, performance and dexterity. Offering essential protection\* for unpredictable outdoor conditions.

Flexible 3.7mm rubber outsole featuring our Megagrip compound, assuring grip and durability in both dry and wet conditions.

2mm PU foam insole for maximal comfort.

360° foot covering with newly developed upper material. 50/50 blend of wool and synthetics improves foot climate and reduces odor. Synthetic fibers provide mechanical strength and durability.

Designed for function, with no nonsense.

This style is part of our Medium Ground Feel product philosophy.

-

### USAGE

Outdoor training, parkour, walking, exploring, trekking, fitness.

### WEIGHT

W38= 3,65oz / 103gr

M43= 4,8oz / 136gr

### CARE INSTRUCTION

Machine Wash Cold / Air Dry



2 mm PU foam insole + Wool / Poly sockliner

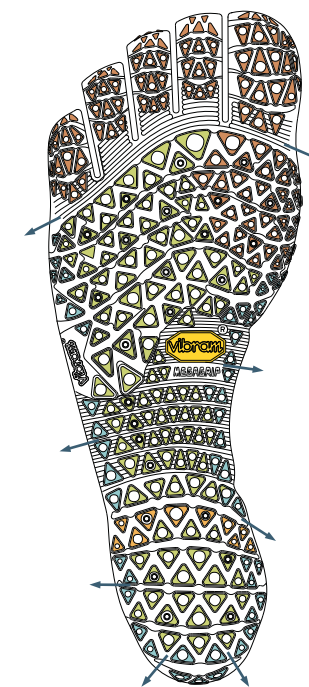


PU film protection and reinforcement



Multidirectional lug design

50% Wool / 50% Polyester material all around the foot



- GRIP
- TRACTION
- STABILITY
- BRAKE
- CUSHIONING
- SELF CLEANING

3.7 mm rubber outsole compound:

**MEGAGRIP**





## Women's



**18W7101**  
Black



**21W7101**  
Military / Orange



**23W7105**  
Hydro / Black

## Men's



**18M7101**  
Black



**21M7101**  
Military / Orange



**23M7105**  
Hydro / Black

# V-TREK

TOOL FOR WALKING, HIKING  
AND TREKKING

Flexible 4mm rubber outsole featuring the Megagrip rubber compound - our premium outdoor formula for ultimate grip in both dry and wet conditions.

4mm PU midsole adds a touch of cushion for all movements. 360° foot covering with newly developed upper material.

50/50 blend of wool and synthetics improves foot climate and reduces odor. Synthetic fibers provide mechanical strength and durability.

This style is part of our Moderate Ground Feel product philosophy.

-

## USAGE

Hiking, trekking, and traveling. The outdoor essential.

**Great also for casual wear**

## WEIGHT

W38= 4,9oz / 139gr

M43= 6,5oz / 185gr

## CARE INSTRUCTION

Machine Wash Cold / Air Dry



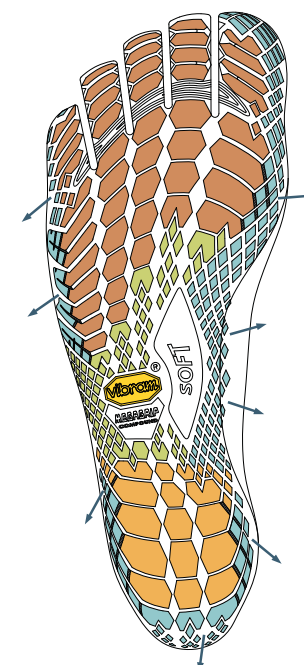
50% WOOL /  
50% Polyester  
sockliner



50% Wool / 50%  
Polyester material  
all around the foot



4 mm Soft  
Polyurethane  
insole



- GRIP
- TRACTION
- STABILITY
- BRAKE
- CUSHIONING
- SELF CLEANING

4 mm  
rubber outsole  
compound:

**MEGAGRIP**





## Women's



**19W7401**  
Black / Black



**18W7402**  
Military / Purple



**23W7402**  
Denim / Red

## Men's



**19M7401**  
Black / Black



**18M7402**  
Military / Dark Grey



**23M7402**  
Denim / Red

# V-TREK INSULATED

TOOL FOR WALKING, HIKING AND  
TREKKING, OFFERING INSULATION  
FOR WARMTH

Resistant Nylon Shell with Fleece Lined Collar,  
Tongue & Quarter Panels.

Brushed Toe fabric for easy flexibility and  
enhanced  
comfort compared to older models.

Toe film protection on top of and between toes.

Hypatex overlay braces for non-absorbent water  
shedding.

This style is part of our Moderate Ground Feel  
product philosophy.

-

## USAGE

Hiking, trekking, and traveling when additional  
foot warmth is necessary.

**Great also for casual wear**

## WEIGHT

W38= 6,2oz / 176gr

M43= 7,8oz / 221gr

## CARE INSTRUCTION

Machine Wash Cold / Air Dry



Polyester fleece  
lining 3/4  
construction

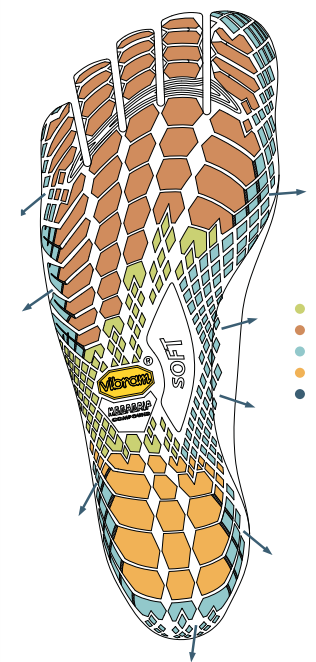


Resistant  
Nylon Shell

Insulation layer  
inside



4 mm Soft  
Polyurethane  
insole



- GRIP
- TRACTION
- STABILITY
- BRAKE
- CUSHIONING
- SELF CLEANING

4 mm  
rubber outsole  
compound:

**ICETREK**





## Women's



**20W7801**  
Black



**20W7803**  
Military / Grey

## Men's



**20M7801**  
Black



**20M7803**  
Military / Black

# V-TRAIL 2.0

YOUR ESSENTIAL TOOL FOR OUTDOOR  
RUNNING PERFORMANCE

3D Cocoon mesh offers protection from sharper objects during outdoor training, like rocks or acorns. This tridimensional nylon mesh is molded into the rubber sole - 3D Cocoon disperses the point of impact of hard and sharp objects. Continues to offer excellent proprioception and dexterity.

Megagrip rubber compound offers supreme grip in both wet and dry conditions.

This style is part of our Moderate Ground Feel product philosophy.

-

## USAGE

Ideal for running in nature, on trails or during obstacle races - the ultimate tool for moving on unpredictable surfaces.

## WEIGHT

W38= 5,0oz / 142gr

M43= 6,4oz / 182gr

## CARE INSTRUCTION

Machine Wash Cold / Air Dry



3D COCOON  
technology  
inside

**3D COCOON**

3.7 mm rubber  
outsole  
compound:

**MEGAGRIP**





## Women's



**19W7601**  
Black / Yellow



**19W7603**  
Blue / Green



**23W7604**  
Pompeian Red / Black

## Men's



**19M7601**  
Black / Yellow



**19M7603**  
Blue / Orange



**23M7604**  
Pompeian Red / Black

# SPYRIDON EVO

THE TECHNICAL, OFF-ROAD TRAIL TOOL

Designed to perform on muddy and uneven trails, the Spyridon EVO is the ideal shoe for adventurous runners. It boasts a 3,7mm Vibram Megagrip outsole for excellent grip, plus a 3mm PU foam insole for comfort. The addition of 3D Cocoon mesh disperses the point of impact of rocks, roots, acorns and other hard, sharp objects.

This style is part of our Moderate Ground Feel product philosophy.

-

## USAGE

Trail running, obstacle courses, unpredictable surfaces

## WEIGHT

W38 = 8,4oz / 238,14gr

M43 = 10,9oz / 309gr

## CARE INSTRUCTION

Machine Wash Cold / Air Dry



3D COCOON  
technology  
inside

**3D COCOON**

3.7 mm rubber  
outsole  
compound:

**MEGAGRIP**





## Women's



**22W5501**  
Black / Black



**23W5502**  
Green / Camo

## Men's



**22M5501**  
Black / Black



**23M5502**  
Green / Camo





A close-up photograph of a black Vibram sole shoe tread on a wet rock with water splashing over it. The shoe is black with yellow Vibram branding. The sole is shown in profile, resting on a wet, brownish rock. Water is splashing over the sole, creating white foam and droplets. The background is blurred, showing more of the wet rock and water.

# WATER

Grip and protection\* to move in and around  
the water in your natural way.



# V-AQUA

## THE AMPHIBIOUS TOOL

Same minimalistic outsole as V-Alpha: 3.7 mm Megagrip compound. Light, thin, and flexible tool, offering essential protection. Allows natural foot movement and offers protection\* for water activity, when going barefoot is not an option.

2mm EVA insole with 2mm perforations through each sole, allowing water to move through the shoe and dry quickly.

Snug fit and fast drying synthetic mesh upper, adjustable by two Velcro straps.

Distinctive silicone print in the lining increases friction between the skin and shoe, allowing for a more secure fit when water would usually encourage slipping.

This style is part of our Medium Ground Feel product philosophy.

-

## USAGE

Grip and protection\* in and around the water for movement on wet rocks, in riverbeds, in canoes, kayaks, and SUP. Excellent for swimming and even triathlon race transitions. Successor to the Signa.

## WEIGHT

W38= 3,95oz / 112gr

M43= 4,9oz / 138gr

## CARE INSTRUCTION

Machine Wash Cold / Air Dry



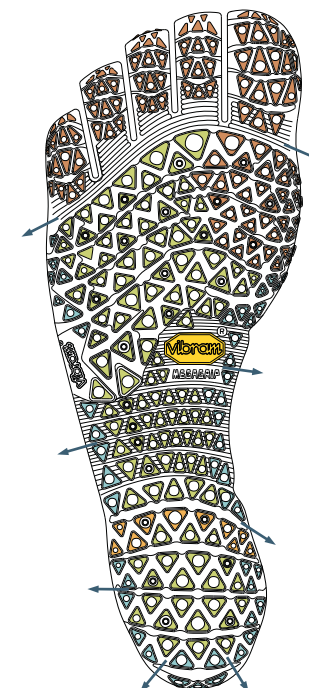
2 mm  
EVA insole



Double hook&loop  
closure



Perforated  
sole unit



No H2O absorbing  
Polyester mesh

- GRIP
- TRACTION
- STABILITY
- BRAKE
- CUSHIONING
- SELF CLEANING

Silicone  
prints inside

3.7 mm  
rubber outsole  
compound:

**MEGAGRIP**





## Women's



**18W7301**  
Black



**18W7303**  
Light Grey / Blue

## Men's



**18M7301**  
Black



**18M7303**  
Light Grey





A close-up photograph of a person's feet wearing dark blue Vibram FiveFingers shoes. The person is standing on concrete steps, with one foot slightly raised. The shoes have a distinctive textured sole and yellow accents. The background is a blurred concrete wall.

# LIFESTYLE

Stay connected to the ground  
even on casual days.

# CVT LB

THE NATURAL, MINIMALIST  
DAILY SOLUTION

This casual minimalist shoe features a soft hemp upper paired with an ultra-thin outsole that features Vibram Litebase and Megagrip technology.

This style is part of our Maximal Ground Feel product philosophy.

-

## USAGE

Casual, travel

## WEIGHT

W38= 3,6oz / 102gr

M43= 2,6oz / 74gr

## CARE INSTRUCTION

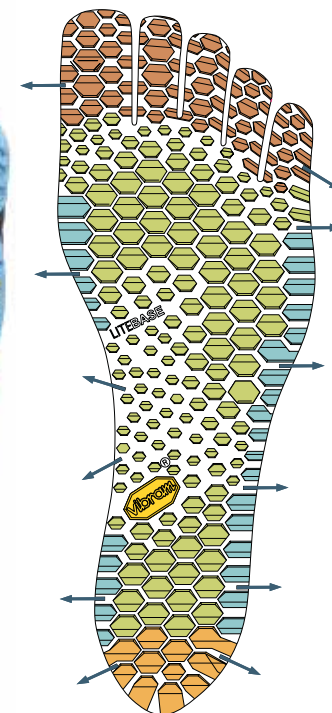
Machine Wash Cold / Air Dry



No insole.  
Canvas sockliner



Hemp Mesh  
material



- GRIP
- TRACTION
- STABILITY
- BRAKE
- CUSHIONING
- SELF CLEANING

3 mm  
rubber outsole  
compound:  
**LITEBASE  
MEGAGRIP**





## Women's



**23W9901**  
Grey / Light Blue



**23W9902**  
Green / Beige



**23W9903**  
Red / Ice



**23W9904**  
Grey / Black

## Men's



**23M9901**  
Grey / Light Blue



**23M9902**  
Green / Beige



**23M9903**  
Red / Ice



**23M9904**  
Grey / Black



# KSO ECO

THE NATURAL,  
ECO-CONSCIOUS SOLUTION

This casual minimalist shoe features a soft hemp upper paired with a N-OIL outsole, which is made with more than 90% natural ingredients.

This style is part of our Maximal Ground Feel product philosophy.

-

## USAGE

Casual, travel

## WEIGHT

W38= 3,5oz / 99gr

M43= 4,9oz / 139gr

## CARE INSTRUCTION

Machine Wash Cold / Air Dry

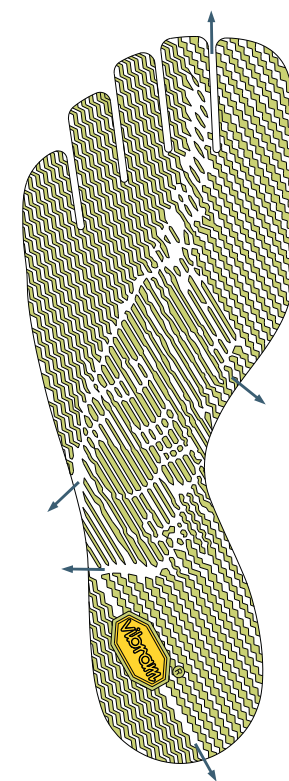
Fast lacing



No insole.  
Cotton sockliner



Hemp Mesh  
material



- GRIP
- TRACTION
- STABILITY
- BRAKE
- CUSHIONING
- SELF CLEANING

3 mm  
rubber outsole  
compound:

**ECOSTEP  
NATURAL**





## Women's



**21W9501**  
Grey



**21W9503**  
Beige

## Men's



**21M9501**  
Grey



**21M9502**  
Military Green

# KSO ECO WOOL

THE COMFORTABLE,  
ECO-CONSCIOUS SOLUTION

This casual minimalist shoe features a wool upper paired with a Vibram N-OIL outsole, which is made with more than 90% natural ingredients.

This style is part of our Maximal Ground Feel product philosophy.

-

## USAGE

Casual, travel

## WEIGHT

W38= 5,9oz / 142gr

M43= 4,8oz / 184gr

## CARE INSTRUCTION

Hand Wash Cold / Air Dry

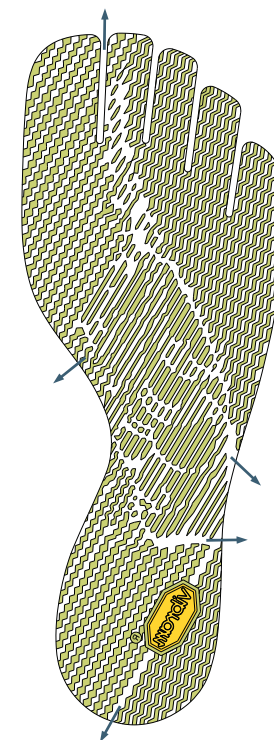
Fast lacing



No insole.  
Wool sockliner



Wool  
material



- GRIP
- TRACTION
- STABILITY
- BRAKE
- CUSHIONING
- SELF CLEANING

3 mm  
rubber outsole  
compound:

**ECOSTEP  
NATURAL**





## Women's



**21W8201**  
Grey / Black



**21W8202**  
Grey / Light Grey / Black

## Men's



**21M8201**  
Grey / Black



**21M8202**  
Grey / Light Grey / Black

# V-NEOP

CASUAL, FUNCTIONAL  
NEOPRENE SOLUTION

This casual minimalist shoe features a comfortable, functional neoprene upper and a grippy Vibram outsole that excels in the city and in and around waters.

This style is part of our Maximal Ground Feel product philosophy.

-

## USAGE

Casual, water and travel

## WEIGHT

W38= 5,0oz / 142gr

M43= 6,5oz / 184gr

## CARE INSTRUCTION

Machine Wash Cold / Air Dry

Stretches to  
slip on and off

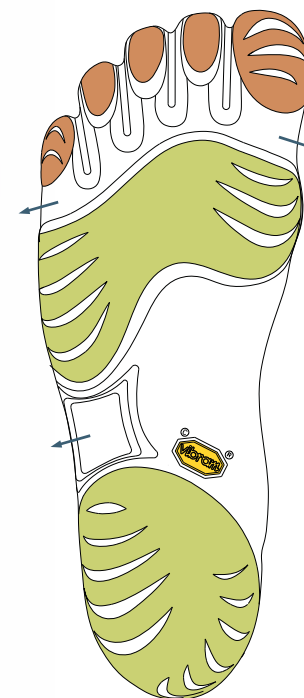
1mm EVA  
insole + canvas  
sockliner

Neoprene  
material

Soft microfiber  
material

3.5 mm  
rubber outsole  
compound:

**XS TREK**



- GRIP
- TRACTION
- STABILITY
- BRAKE
- CUSHIONING
- SELF CLEANING





## Women's



**21W9601**  
Black / White

## Men's



**21M9601**  
Black / White

# CVT-LEATHER

THE NATURAL DAILY SOLUTION

This casual minimalist shoe provides nature lovers a breathable, sustainable slip-on convertible shoe with a true barefoot feel.

This style is part of our Moderate Ground Feel product philosophy.

-

## USAGE

Casual and travel

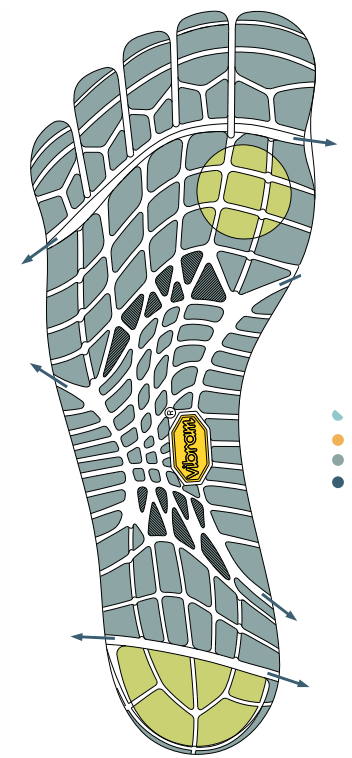
## WEIGHT

W38= 2,78oz / 79gr

M43= 3,45oz / 98gr

## CARE INSTRUCTION

Machine Wash Cold / Air Dry



K100 Kangaroo  
Leather

No insole.  
Leather sockliner

6.5 mm  
expanded sole  
compound:  
**VI-LITE**

Rubber Dots  
compound:  
**XS TREK**

- GRIP
- TRACTION
- STABILITY
- BRAKE
- CUSHIONING
- SELF CLEANING





## Women's



**20W7901**  
Leather Black



**23W7902**  
Leather Brown

## Men's



**20M7901**  
Leather Black



**23M7902**  
Leather Brown

# VI-B ECO

THE COMFORTABLE, ECO-CONSCIOUS  
SLIP-ON SOLUTION

Slip on

Hemp upper  
material

No insole.  
Cotton sockliner

Cute, comfortable and stylish, our popular ballet flat now features an eco-friendly hemp upper paired with a flexible, durable Ecostep Natural sole.

This style is part of our Maximal Ground Feel product philosophy.

-

## USAGE

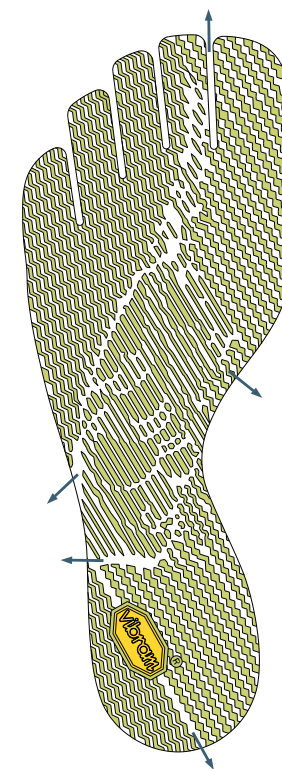
Casual and travel

## WEIGHT

W38 = 3,17oz / 89,87gr

## CARE INSTRUCTION

Machine Wash Cold / Air Dry



- GRIP
- TRACTION
- STABILITY
- BRAKE
- CUSHIONING
- SELF CLEANING

3 mm  
rubber outsole  
compound:

**ECOSTEP  
NATURAL**





## Women's



**23W8701**  
Black



**23W8702**  
Burgundy



**23W8703**  
Silver / Grey



# ORIGINALS

How we started this journey - ride on!





# CLASSIC ECO

THE CLASSIC ECO-CONSCIOUS  
SOLUTION

Our Classic FiveFingers now has an eco-friendly upgrade. Featuring an Ecostep Natural outsole, this popular shoe fits and feels as great as ever.

This style is part of our Maximal Ground Feel product philosophy.

-

## USAGE

Walking and casual

## WEIGHT

W38 = 4,59oz / 130.12gr

M43 = 5,64oz / 159.89gr

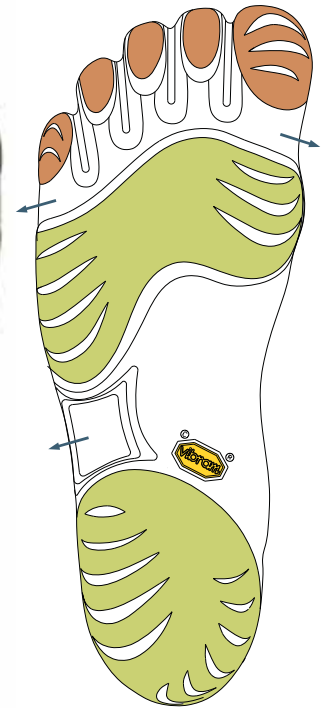
## CARE INSTRUCTION

Machine Wash Cold / Air Dry

Slip on

1mm foam  
insole

Mesh upper  
material



- GRIP
- TRACTION
- STABILITY
- BRAKE
- CUSHIONING
- SELF-CLEANING

3.5 mm  
rubber outsole  
compound:

**ECOSTEP  
NATURAL**





## Women's



**23W8501**  
Black

## Men's



**23M8501**  
Black

# KSO VINTAGE

CASUAL, VERSATILE, DAILY SOLUTION

This casual, comfortable shoe features a thin, breathable upper material with a single strap hook-and-loop closure system designed to keep stuff out.

-

## USAGE

Casual, gym, travel

## WEIGHT

W38= 4,67oz / 132gr

M43= 6,15oz / 174gr

## CARE INSTRUCTION

Machine Wash Cold / Air Dry

Hook-and-loop  
closure

Stretch Polyimide  
material

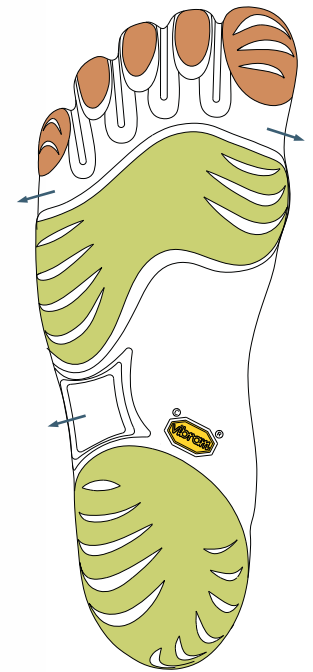
2mm EVA  
insole + polyester  
sockliner

Polyester  
microfiber

Hemp Mesh  
material

3.5 mm  
rubber outsole  
compound:

**XS TREK**



- GRIP
- TRACTION
- STABILITY
- BRAKE
- CUSHIONING
- SELF CLEANING





## Women's



**21W1410**  
White

**KSO**  
The original KSO is back.



**W148**  
Black

## Men's



**21M1410**  
White

**KSO**  
The original KSO is back.



**M148**  
Black

# PERFORMANCE SOCKS

The toes socks series is designed to be used with toe shoes and standard shoes. It is engineered to provide comfort for toes and controls moisture.

## Athletic No Show

- Arch compression
- Flexible toes
- Midweight

### Tech Specs

#### MATERIAL

Coolmax®  200 N Knitting + Tight Fit

#### COMPOSITION

(Styles: S15N01,S15N02,S15N03,S18N01,S18N02, S18N03, S18N04,S15N12P S15N23P)

76% Coolmax® 21% Nylon 3% Lycra

(Styles: S21N01, S21N02, S21N03, S21N04, S21N05, S21N24P, S21N35P)

70% Coolmax® 27% Nylon 3% Lycra

Wash / Do Not Bleach / Do Not Iron / Do Not Dry Clean

SIZING					
		S	M	L	XL
EU		34-37	38-41	42-45	46+
US	men	up to 5	6-8	8.5-11.5	12+
	women	up to 8.5	7.5-9.5	10-13	13.5+
UK		up to 4	4.5-7	7.5-10.5	11+

## Wool Blend Crew

- Arch compression
- Flexible toes
- Midweight

### Tech Specs

#### MATERIAL

Merino Wool + 200 N Knitting + Tight Fit

#### COMPOSITION

69% Merino Wool 28% Nylon 3% Lycra Machine

Wash / Do Not Bleach / Do Not Iron / Do Not Dry Clean

## Ghost

- Stretch construction
- Flexible toes
- Extra thin

### Tech Specs

#### MATERIAL

Coolmax®  200 N Knitting + Tight Fit

#### COMPOSITION

80% Coolmax® 18% Nylon 2% Lycra

Wash / Do Not Bleach / Do Not Iron / Do Not Dry Clean



## Athletic No Show



Athletic No Show  
S: S15N01S M: S15N01M  
L: S15N01L XL: S15N01XL  
White



Athletic No Show  
S: S15N02S M: S15N02M  
L: S15N02L XL: S15N02XL  
Black



Athletic No Show  
S: S15N03S M: S15N03M  
L: S15N03L XL: S15N03XL  
Grey



Athletic No Show  
S: S18N01S M: S18N01M  
L: S18N01L XL: S18N01XL  
Military green



Athletic No Show  
S: S18N02S M: S18N02M  
L: S18N02L XL: S18N02XL  
Yellow



Athletic No Show  
S: S18N03S M: S18N03M  
L: S18N03  
Purple



Athletic No Show  
S: S18N04S M: S18N04M  
L: S18N04L XL: S18N04XL  
Red



Athletic No Show  
S: S21N02S M: S21N02M  
L: S21N02L XL: S21N02XL  
Light Grey



Athletic No Show  
S: S21N03S M: S21N03M  
L: S21N03L XL: S21N03XL  
Dark Grey



Athletic No Show  
S: S21N04S M: S21N04M  
L: S21N04L XL: S21N04XL  
Yellow/Grey



Athletic No Show  
S: S21N05S M: S21N05M  
L: S21N05L XL: S21N05XL  
Red/Black



Athletic No Show - 2 Pack  
S: S15N12PS M: S15N12PM  
L: S15N12PL XL: S15N12PXL  
White - Black



Athletic No Show - 2 Pack  
S: S15N23PS M: S15N23PM  
L: S15N23PL XL: S15N23PXL  
Grey - Black



Athletic No Show - 2 Pack  
S: S21N24PS M: S21N24PM  
L: S21N24PL XL: S21N24PXL  
Light Grey - Yellow Grey



Athletic No Show - 2 Pack  
S: S21N35PS M: S21N35PM  
L: S21N35PL XL: S21N35PXL  
Dark Grey - Red Black

## Wool Blend Crew



Wool-Blend Crew  
S: S15C01S M: S15C01M  
L: S15C01L XL: S15C01XL  
Black



Wool-Blend Crew  
S: S18C01S M: S18C01M  
L: S18C01L XL: S18C01XL  
Military Green



Wool-Blend Crew - 2 Pack  
S: S15C12PS M: S15C12PM  
L: S15C12PL XL: S15C12PXL  
Black - Military Green



Ghost  
S: S15G01S M: S15G01M  
L: S15G01L XL: S15G01XL  
White



Ghost  
S: S15G02S M: S15G02M  
L: S15G02L XL: S15G02XL  
Black



Ghost - 2 Pack  
S: S15G12PS M: S15G12PM  
L: S15G12PL XL: S15G12PXL  
White - Black



# NOTES

---

---

---

---

---

---

---

---

---

---



# NOTES

---

---

---

---

---

---

---

---

---

---

**Vibram S.p.A.**

Via Colombo 5  
21041 Albizzate  
ITALIA  
Tel: 39 0331999777  
[www.eu.vibram.com](http://www.eu.vibram.com)

**Vibram Connection Lab**

40 Commonwealth Ave,  
Boston, MA 02215  
Tel: 1 857 263-8508  
[www.us.vibram.com](http://www.us.vibram.com)

**Vibram Rubber China**

Fengshen Avenue 257  
Auto City, Xinhua Town  
Haudu, GuangZhou, Guang Dong  
510800, China  
Tel: 0086 2086732333  
[www.vibram.com](http://www.vibram.com)

Most Vibram FiveFingers® are machine washable.

Vibram FiveFingers® designs and utility are patented or patent pending. Vibram S.p.A. has been issued or has pending over 150 patents worldwide protecting our intellectual property.

VIBRAM, the Octagon Logo, the Yellow Octagon Logo, Fivefingers and the FiveFingers Logo are registered trademarks of Vibram S.p.A.